



United Way  
of Washtenaw County



# ANNUAL REPORT 2022



**#UNITEDWETHRIVE**



# LEADERSHIP



**GREG DILL, BOARD CHAIR**

To Our Community,

This report is a look back at 2022 and sets the stage for a look forward! Our agenda for change is rooted in equity and develops strategies and initiatives that will help everyone in this community thrive. Our strategic plan pushes us to create and catalyze deeper community partnership, adopt community-centric fundraising principles, and to always center people first.

United Way of Washtenaw County's (UWWC) strength lies in community convening and collaboration. We are boundary-spanners who work across sectors to engage individuals, businesses, nonprofits, government agencies and community groups to realize meaningful change in our county. Our 2022-2025 strategic plan invests in solutions that challenge the status quo and create new ways to work as an organization. Our intent is to dismantle the historical patterns of structural inequities that pose ongoing barriers for all people to flourish.

We have planned changes in the way we connect with our volunteers and donors through community-centric fundraising, how an equity lens shifts the way resources are invested, and how we strengthen people of color led nonprofits in local neighborhoods.

We are excited for our future working with new partners and creating a community where everyone can thrive.

Sincerely,



**PAM SMITH, PRESIDENT & CEO**

**Gregory Dill**  
Board Chair

**Pam Smith**  
President and CEO

## OUR MISSION: UNITED WAY OF WASHTENAW COUNTY CONNECTS PEOPLE, RESOURCES, AND ORGANIZATIONS TOGETHER TO CREATE A THRIVING COMMUNITY FOR EVERYONE.

### 2022 BOARD OF DIRECTORS

**Justin Bagdady**  
Bodman PLC

**Erik Bakker**  
Bank of Ann Arbor

**Rich Chang**  
New Foundry  
UWWC Immediate Past  
Board Chair

**Steve Day**  
Consumers Energy

**HJ Decker**  
DTE Energy  
UWWC Board Treasurer

**Gregory Dill**  
Washtenaw County Government  
UWWC Chair

**Marjorie Dixon**  
Conlin, McKenney &  
Philbrick, PC

**Gilbert Eberly**  
Chrysler/Stellantis

**Cindy Elliott**  
IHA

**Derrick Jackson**  
Washtenaw County Sheriff

**Darryl Johnson**  
Mentor2Youth, Inc

**Diane Keller**  
A2Y Chamber of Commerce  
UWWC Secretary

**Nicole Kontyko**  
KeyBank

**Linda Koos**  
Joyn Insurance

**Yodit Mesfin-Johnson**  
Nonprofit Enterprise at Work

**Mia Milton**  
Eastern Michigan University  
Foundation

**Rev. Willie Powell**  
Grace Fellowship-House  
of Solutions

**Michael Rein**  
University of Michigan

**Cristi Tobelmann**  
DaySmart Software, Inc.

**Brandon Tucker**  
Washtenaw Community College  
UWWC Vice Chair

## THANK YOU FOR YOUR SUPPORT

United Way of Washtenaw County is leaning into Community Centric Fundraising\* and as part of this movement, we want to honor and recognize all the ways people G. A. V. E. (Give, Advocate, Volunteer, Explore Equity) in support of their community. Thank you for working together throughout the year to ensure people in our community have the opportunity to thrive!



Thank you to our campaign co-chairs Tim Marshall, Emily Moore-Marshall and Pastor Mashod Evans



Thank you Nicole Kontyko, 2022 Power of the Purse chair!



Thank you to the 200+ guests who attended our Campaign Kickoff event at Eastern Michigan University. Our first major in-person event since the 2020 pandemic!



Thank you Tocqueville members, who gathered in person once again to celebrate our community and Tocquevilles' impact, hosted by Argus Farm Stop. Photo: Dr. Lori Pierce and Steve Dobson



Thank you Emerging Philanthropists, for dropping off more than 6,000 items donated during the Community Baby Shower and delivering them to SOS Community Services, Destiny and Purpose Community Outreach (DAPCO) and Saline Area Social Services.

\*For more information about G A V E  
Community Centric Fundraising



# COMMUNITY IMPACT

## MOBILIZING THE CARING POWER OF OUR COMMUNITY

### UPTOGETHER: GUARANTEED INCOME PILOT

United Way of Washtenaw County formed a new partnership with UpTogether, an antipoverty nonprofit, and the Ann Arbor Area Community Foundation to pilot a solution to address the financial insecurity experienced by Washtenaw County families. Currently, 31% of people living in Washtenaw County struggle to afford basic needs. Through this guaranteed income pilot, the families work with local human service agencies, to receive quarterly payments of \$625 to meet their family's needs, as they see fit, for two years.



Ann Arbor Area  
Community Foundation  
For good. For ever.



Chloe was born and raised in Michigan. She is a mom of three boys and works full time as a hardware specialist. After returning home from Houston, Chloe was experiencing homelessness, joblessness and going through a divorce.

"When I got the first deposit I said - You have got to be kidding me", she says. A friend that she goes to church with shared the information about UpTogether with Chloe and other parents. "If I could thank everyone who put this together I would . Thank you. Deliver that message. I don't have a big group of friends but the people I have, I've been able to help. I've been able to send an incarcerated friend \$10-\$15, which isn't a lot, but it makes a big difference".

## 4 WAYS ORGANIZED LABOR POSITIVELY IMPACTS COMMUNITY



Labor of Love: Annual Gift Drive to support children during the holiday.



Labor/Management Golf Outing: Annual Fundraiser for United Way



National Day of Action: Foundations Preschool Playground Cleanup



Stuff the Bus: Annual School Supply Drive

## 2022 GRANT INVESTMENTS

In 2022, UWWC impacted more than 150,000 Washtenaw County people through 99 grants to 69 local organizations and groups through 7 different grant funds. Below is a list of our current Community Impact Partners, including 16 new grantees. To learn more about our grant investments visit [uwgive.org/grants-awarded](http://uwgive.org/grants-awarded)

*\*We are proud to welcome these agencies as new Community Impact Partners in 2022*

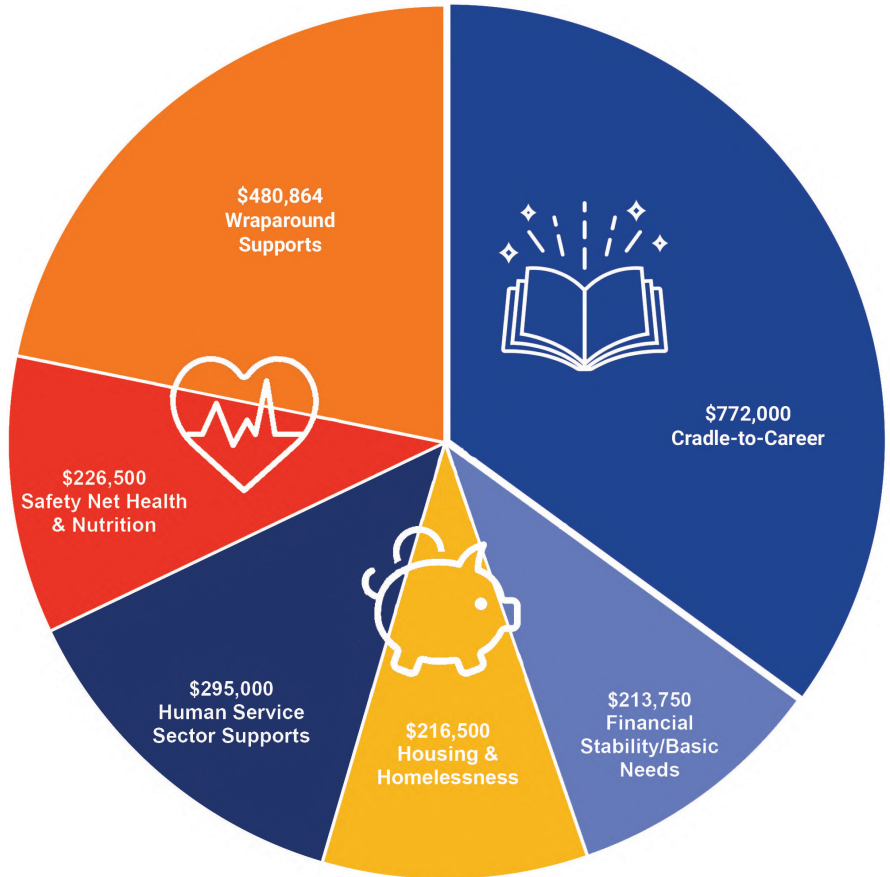
*+Denotes the 36 agencies whose staff and volunteer leadership self-identify as black, indigenous, or people of color.*

A Brighter Way  
Aid in Milan  
Ann Arbor YMCA+  
Bad Credit is Childish\*+  
Bethany Christian Services of Michigan\*  
Big Brothers Big Sisters of Washtenaw County  
Buenos Vecinos+  
Care Seats of Michigan\*+  
Catchafire  
Child Care Network+  
Coalition to Re-envision Our Safety\*+  
Come Unity Move, Inc.\*+  
Community Action Network+  
Community Family Life Centers+  
Community Resource Center, Inc  
Dawn Farm  
Destiny and Purpose Community Outreach+  
Dress for Success\*+  
Educate Youth  
Elevation Youth Corp+  
EMU Foundation-Family Empowerment Program  
Fair Housing Center of Southeast & Mid Michigan  
Faith in Action  
Feonix - Mobility Rising\*  
Food Gatherers  
Foundations Preschool of Washtenaw County  
Friends In Deed  
Girls Group  
Girls on the Run of Southeastern Michigan+  
Growing Hope+  
Habitat for Humanity Huron Valley

Hands Across The Water, Inc\*  
Interfaith Council for Peace and Justice+  
Interfaith Hospitality Network of Washtenaw County+  
Jewish Family Services of Washtenaw County  
Journey of Faith Christian Church+  
Kekere Freedom School\*+  
Mentor2Youth+  
Michigan Ability Partners  
Michigan Advocacy Program+  
Mighty Oak Project\*+  
NEW: Nonprofit Enterprise at Work+  
Our Community Reads\*+  
Our House+  
Ozone House+  
Peace Neighborhood Center+  
SafeHouse Center  
Samaritas\*  
SOS Community Services+

Stand with Trans  
Student Advocacy Center of Michigan+  
Survivors Speak\*+  
Telling It  
The Dispute Resolution Center+  
The Family Learning Institute+  
The Mutual Aid Network of Ypsilanti\*+  
The Women's Center of Southeastern Michigan  
UpTogether\*  
Washtenaw Alliance for Children and Youth  
Washtenaw Area Council for Children  
Washtenaw County Black Farmers Fund+  
Washtenaw Housing Alliance  
Washtenaw Intermediate School District  
Washtenaw Literacy  
Washtenaw Community College  
WCC Entrepreneurship Center  
We the People Opportunity Farm+  
Youth Arts Alliance\*+  
Ypsilanti Meals on Wheels+

In 2022, United Way of Washtenaw County invested over \$2.2M into 69 local organizations and groups to foster a more equitable Washtenaw County.



# EQUITY IMPACT

## BUILDING EQUITY AND OPPORTUNITY

This year we reviewed and updated our equity vision and anti-racism statement as part of our strategic planning process.

United Way of Washtenaw County recognizes that the strength and vitality of an entire community is tied to just and equitable access to resources and opportunities. We recognize structural racism and other forms of oppression which have contributed to persistent disparities which we seek to dismantle.

We define equity as the presence of justice and fairness within our procedures, processes and distribution of resources.

### 2022 Community Investments Equity Data Points:

- ◆ 53%: Funding to Ypsilanti/Eastern Washtenaw County
- ◆ 52%: Grant programs that are led by individuals who are black, indigenous or people of color
- ◆ 73%: Grants awarded prioritized people experiencing poverty



In 2022 United Way of Washtenaw County partnered with other local United Ways in our state, along with the Disability Network of Washtenaw, Monroe and Livingston, to bring the first ever 21-Day Challenge: Disability Justice to Washtenaw County.

## JUSTICE FUND

In 2022 United Way of Washtenaw County launched the Justice Fund\* - a one-time investment totaling \$380,000 to 10 organizations and groups engaging in public policy advocacy and community change work. Programs help people beat the odds, but it is equitable policies and practices that change the odds.

## GRANTEE HIGHLIGHTS

### Care-Based Safety



About the work: Care-Based Safety (CBS) advocates for an unarmed public safety program to respond to behavioral health crises, people struggling with homelessness and other crises that people may face, such as evictions.

"CBS is co-creating with community an ecosystem of community safety using the main premise that we need both urgent response and community building. Urgent response is responding to those in crisis in a timely way, while community building acknowledges the strengths we already have in community through skills and relationships, while offering the opportunity to skill up in order to prevent harm and to respond to each other as neighbors and in relationships in times of need. These priorities are fundamental to strengthening our community towards collective wellness and healing."

Anna Lemler, CBS Member

### Youth Arts Alliance



About the work: The Youth Arts Alliance focuses on youth coalition building for equity and liberation. Youth leadership from area organizations are creating a network for Ypsilanti area youth that is designed and created by Ypsilanti area youth.

"YAA's work has been the catalyst for youth to engage in dialogue and performance in a meaningful way toward healing. YAA's hope is that young people are continuing to learn even beyond their training, growing their capacity toward healing centered care."

Heather Martin, YAA Founding Director

\*To learn more about equity and the Justice Fund



## FISCAL YEAR 7/1/2021 to 6/30/2022

### EXPENSES

UNITED WAY OPERATIONS	
Fundraising	\$ 540,383
Management & General	\$ 407,205
Provision for Uncollectibles	\$ 52,608
In-Kind	\$ 58,446
<b>TOTAL</b>	<b>\$1,058,642</b>

### REVENUE FOR COMMUNITY IMPACT

Donations	\$4,024,049
Grants #	\$ 415,968
Donor Advised Funds	\$ 30,000
In-Kind	\$ 59,234
Investment gains/(losses)	\$ (380,819)
Events	\$ 40,164
Service Fees	\$ 41,846
<b>TOTAL</b>	<b>\$4,230,442</b>

### COMMUNITY IMPACT

INVESTED IN AGENCIES & PROGRAMS	
Grants to Agencies	\$2,208,460
Donor Directed	\$1,070,576
Donor Advised Grants	\$ 116,050
Program Services	\$ 706,787
<b>TOTAL</b>	<b>\$4,101,873</b>

## UNITED WAY VALUE PROPOSITION TO THE COMMUNITY

TOTAL VALUE OF VOLUNTEER HOURS	
Value of Volunteer Hours	\$ 669,667

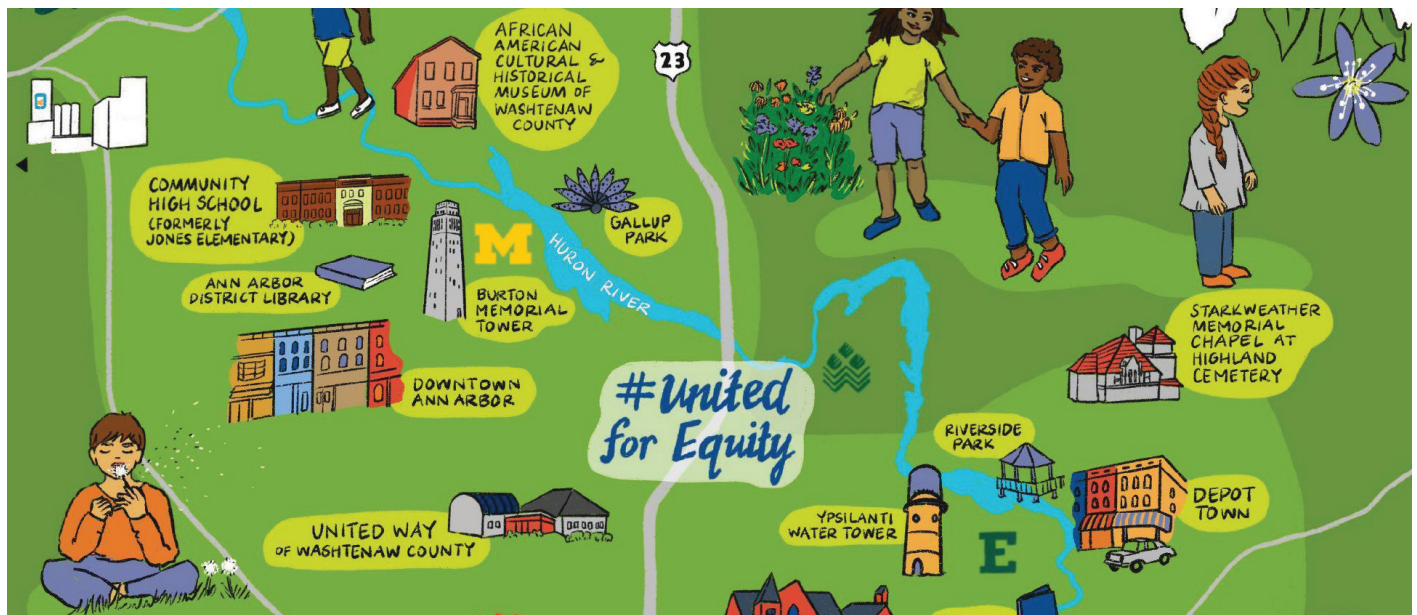
TOTAL VALUE OF CATCHAFIRE	
Catchafire	\$ 528,958

TOTAL VALUE OF VITA	
Saved in Tax Prep Fees	\$ 153,750
Tax Returns & Credits	\$ 1,460,724

**TOTAL LEVERAGED FUNDS FOR VOLUNTEER HOURS, CATCHAFIRE AND VITA : \$2,813,099**

## UNITED WAY STRATEGIC PLAN

United Way of Washtenaw County's 2022-2025 Strategic Plan is a bold step forward and builds on a rich legacy of trust and community impact. We are experts at collaboration, mobilizing community resources, and convening volunteers to advance the common good. However, we know that changes in giving, technology and society have made it more difficult for our traditional business model to flourish. We continue to be guided by the Preferred Futures Subcommittee of board members and volunteers to look for new ways forward that continue to center people, place, impact and Washtenaw County.



"The illustration highlights our community's landmarks; areas for education, leisure and learning. In alignment with the United Way of Washtenaw County's Vision, I wanted to create an image of access, opportunity, and joy." Yen Azzaro, a local artist, illustrator and graphic recorder.

# GIVE. ADVOCATE. VOLUNTEER.

VISIT [UWGIVE.ORG](http://UWGIVE.ORG) TODAY!

## OUR VISION:

AN EQUITABLE COMMUNITY WHERE OPPORTUNITY IS NOT LIMITED AND EVERY MEMBER REACHES THEIR FULL POTENTIAL.

BY THE YEAR  
**2030**  
WE ASPIRE  
TO LIVE IN A  
COMMUNITY  
WHERE

Your zip code no longer predicts your opportunity in life • Life expectancy, regardless of race, ethnicity or income level, is the same across all populations and communities • **Achievement gaps between races and ethnicities are eliminated** • Everyone in our community has safe, comfortable and affordable housing • Members use their power and privilege to end poverty in our county • **Poverty is not intergenerational. If it exists, it is intermittent and brief** • Everyone is able to thrive and experience a life of joy, purpose and rest.

### STAY CONNECTED:

United Way of Washtenaw County | 2305 Platt Rd. Ann Arbor, MI 48104  
734.971.8200 | [liveunited@uwwashtenaw.org](mailto:liveunited@uwwashtenaw.org) | [uwgive.org](http://uwgive.org)



United Way  
of Washtenaw County