

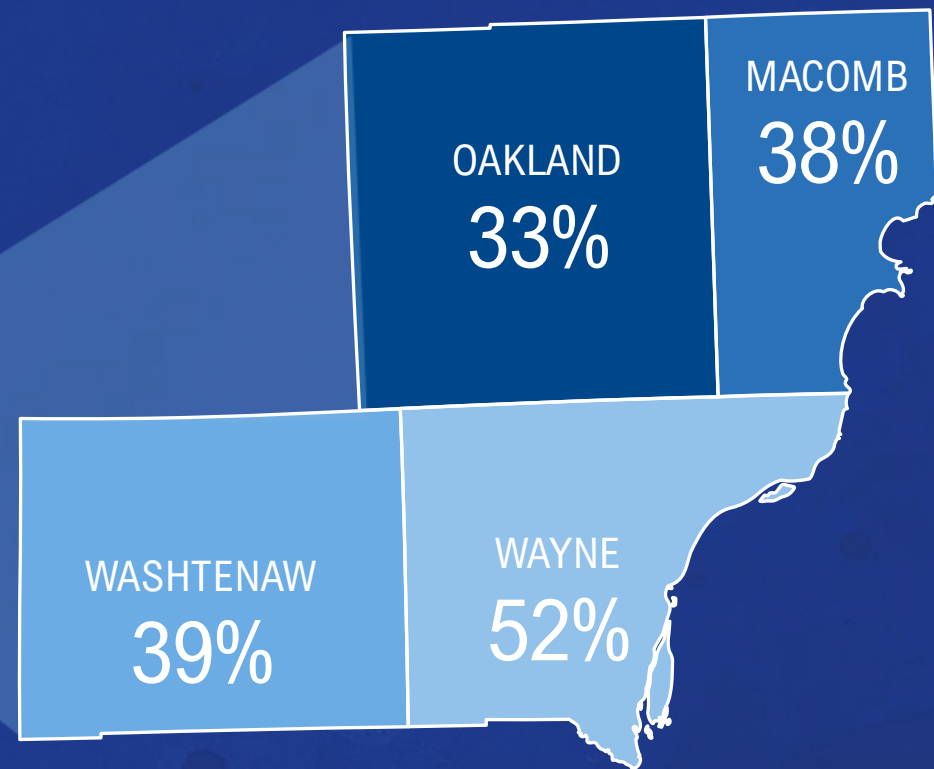
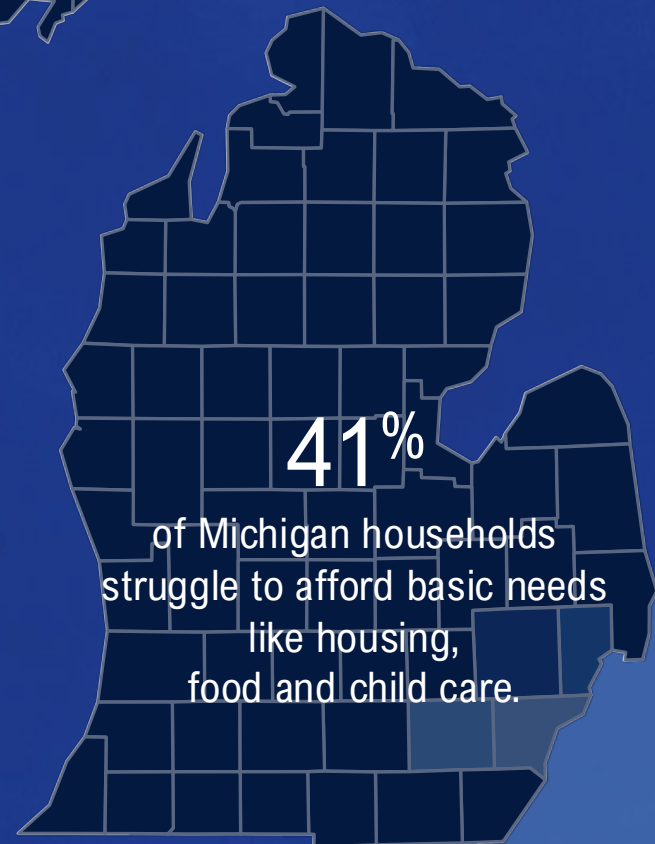


Partner Network Meeting

November 12, 2024



ALICE IN OUR REGION



- 42% of households across the region fall below the ALICE threshold. An increase of 7.7% since 2021.
- At 52% ALICE, households in Wayne County are most likely in the region to fall below the ALICE threshold.
- Precent change in counties
 - Wayne 10.6%
 - Oakland 6.5%
 - Macomb 2.7%
 - Washtenaw -2.5%



Supporting our Community: From Crisis to Stability and Stability to Prosperity

WHO WE SERVE

Our first responsibility is to serve families who fall under the ALICE threshold.

HOW WE WORK

To lift individuals and families above the ALICE threshold, we must increase financial resources and reduce household costs.

WE WILL ACHIEVE THIS THROUGH



United Way Client Services



Connect4Care & Partner Network



Youth Opportunity

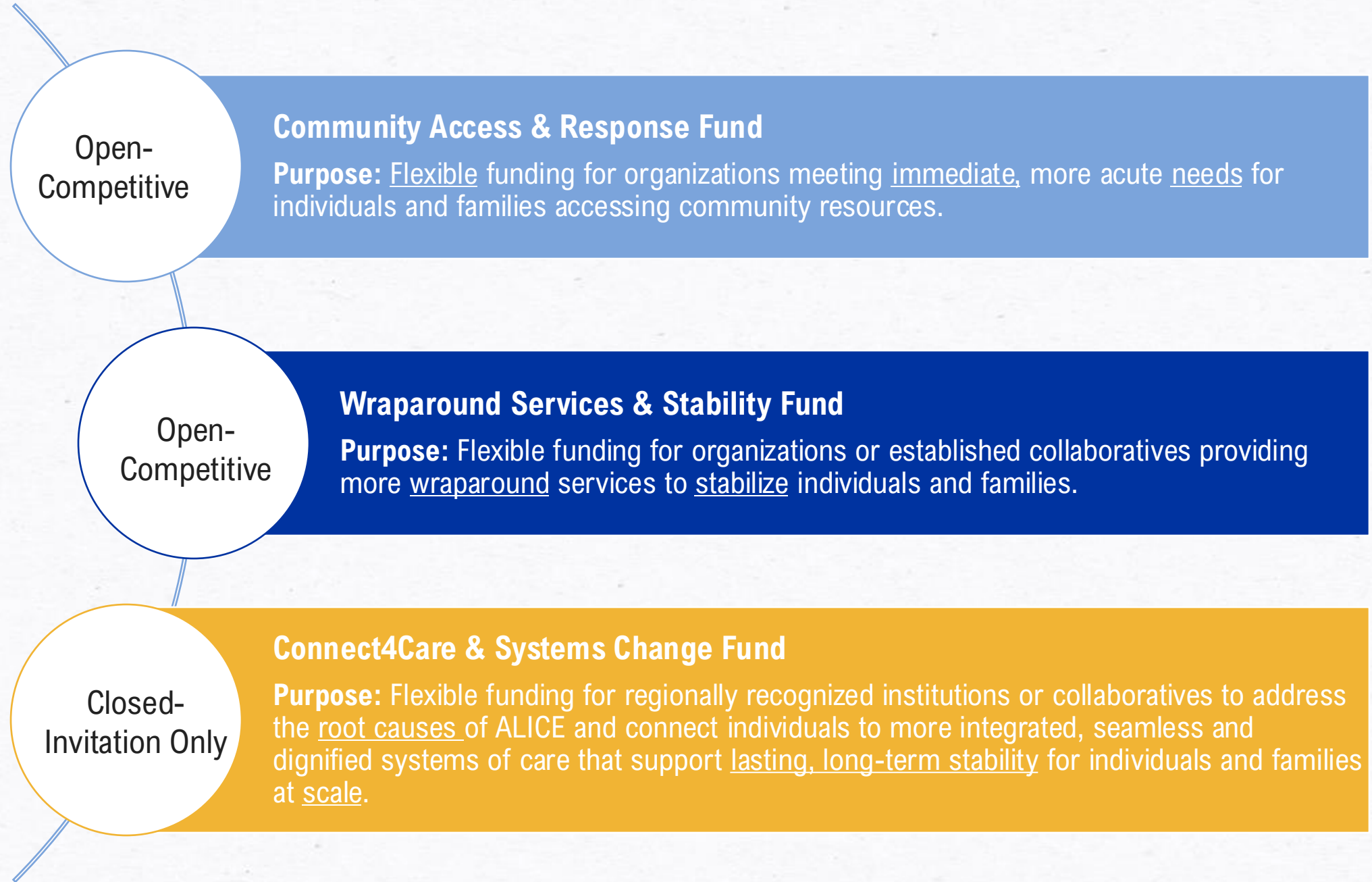


Community Capacity Building



Planned Funding Framework: Overview

All grant programs are designed to resource and engage a coordinated network of partners providing a continuum of services under a shared vision of helping ALICE individuals and families move from crisis to stability and from stability to prosperity in Wayne, Oakland, Macomb, and Washtenaw County.



Community Access & Response Fund

Open-
Competitive

Community Access & Response Fund

Purpose: Flexible funding for organizations meeting immediate, more acute needs for individuals and families accessing community resources.

1. The focus will be on the delivery of services that meet an individual or families' immediate need.
2. Priority areas and eligible services will be identified up front based on 2-1-1 and other community-level data (e.g. emergency food assistance, Out-of-school time enrichment, etc.)
3. For the 2025-2026 Funding Cycle, here are the priorities:
 - a. Emergency food assistance
 - b. Housing - Homelessness diversion resources/prevention
 - c. Out-of-school time supports
 - d. Interventions that address chronic absenteeism
4. Additional details about the types of eligible services under these priority areas will be shared in early 2025 leading up to the application release
5. We anticipate the funding priorities and eligible services could change over time and differ by county to be responsive to emerging community needs



Wraparound Services & Stability Fund

Open-
Competitive

Wraparound Services & Stability Fund

Purpose: Flexible funding for organizations or established collaboratives providing more wraparound services to stabilize individuals and families.

1. Organization's whose services go beyond addressing individual, immediate needs, and instead offer programs that address multiple conditions that impact a household's well-being and quality of life.
 - a. Examples of conditions may include: safe housing, equitable education access, income, access to nutritious food, integrated student supports aimed at eliminating family barriers, etc.
2. Organizations will demonstrate how they connect individuals to a variety of supports that help them move along a pathway to stability.
3. Agencies can apply as an individual or established collaborative with a history of working together
4. Partners will help answer larger questions around impact metrics and understanding of conditions for ALICE individuals/families
 - a. Data based on stewardship lessons learned, understanding of networks currently, etc.



Connect4Care & Systems Change Fund

Closed-
Invitation Only

Connect4Care & Systems Change Fund

Purpose: Flexible funding for regionally recognized institutions or collaboratives to address the root causes of ALICE and connect individuals to more integrated, seamless and dignified systems of care that support lasting, long-term stability for individuals and families at scale.

1. Organizations or focused collaboratives (established or emerging) whose work addresses structural or systemic barriers that prevent households from moving beyond stability to prosperity.
2. This could look like organizations engaged in advocacy efforts and/or organizations who are implementing tools and processes to work together in innovative ways that disrupt barriers that households encounter when trying to navigate and access different systems/services.
3. Two Tracks
 - a. CIE Track: Priority is scale of individuals served or impacted and lasting long-term impact, which alignment to priority CIE issues. In future years, emphasis on commitment to participating along continuum of CIE to achieve highest tier of the CIE model.
 - b. Advocacy Track: Priority is strength of relationship and past engagement with UWSEM on advocacy efforts, as well as alignment to priority advocacy issues. Awards in this track may be lower than stated funding level to align to grassroots budget sizes.
4. Agencies can apply as individuals or collaborative of organizations focused on central purpose.



Planned Communication Touch Points



Key Dates

NOV - DEC

Focus: Investment Framework

- Nov 12 – Partner Network Meeting socializing investments framework
- Nov 15 – Communications from UWSEM program leads to share Network Meeting recording, FAQ, Updates on Coffee Hours, solicit questions.
- Dec 3-5: Virtual “Coffee hours” between interested applicants and UWSEM staff

JAN

Focus: Investment Process

- Jan 21: Partner Network Meeting socializing investments process
- Jan 24: Communications from UWSEM programs leads to share Network Meeting recording
- Jan 30: Invitations to Fund 3 applicants

FEB-MAR

Focus: Application

- Feb 3: Announcements/Posting of Funding Opportunity for all 3 fund timelines
- Feb 2-26: Fund webinars (grant intent, process, and timeline)
- March 3: Application opens; Notification sent that applications are open in SMA
- March 11-28: Fund specific Office Hours for questions
- Apr 11: Applications Due





Questions & Wrap





Thank you

GIVE. ADVOCATE. VOLUNTEER.
 **UNITEDWAYSEM.ORG**

United Way 
United Way
for Southeastern Michigan